

Navigation Data Card Package Installation (Instruction ID: 84190854)

Installation Instructions Part Number

84190854

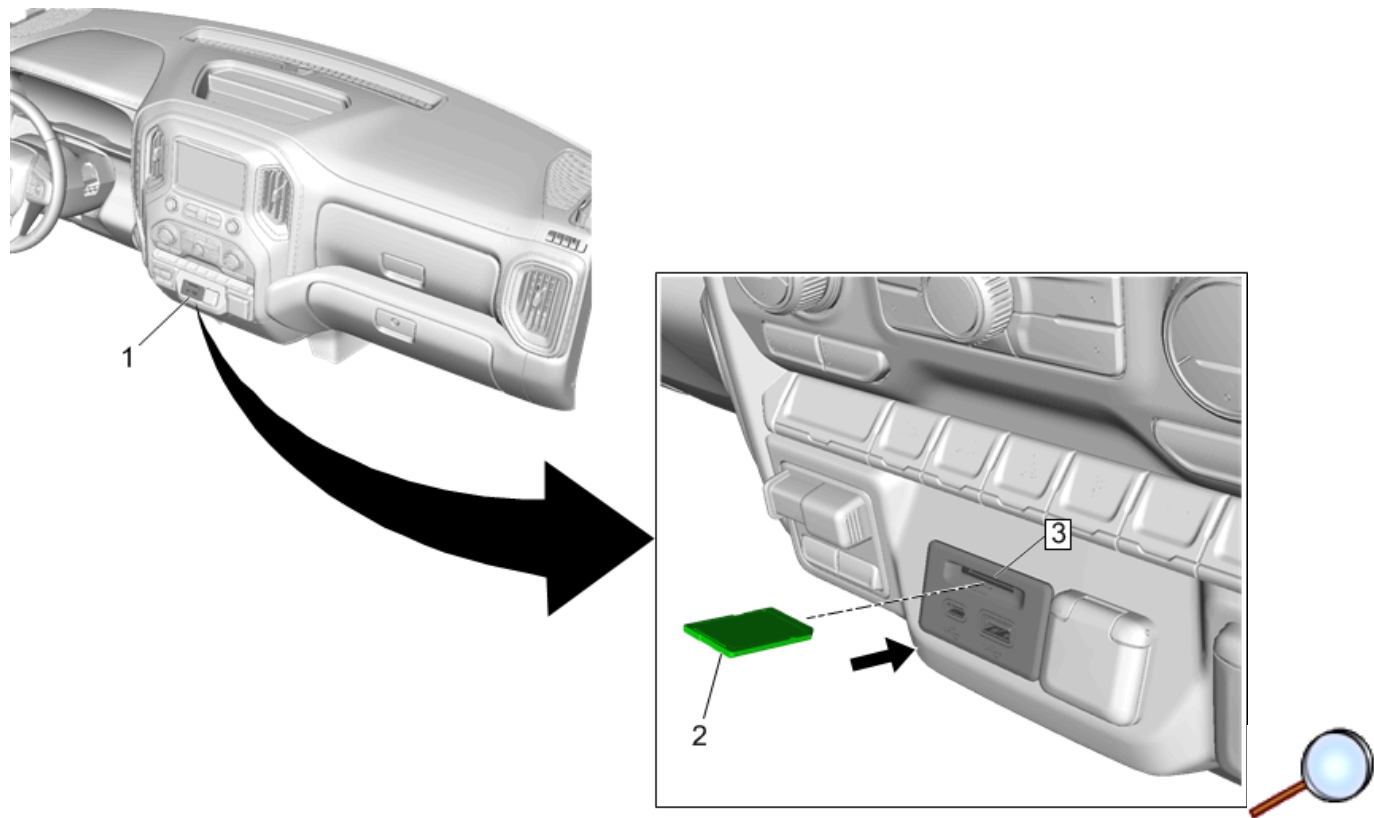
Kit Contents

Qty	Description
1	Navigation SD Card
1	Installation Instructions

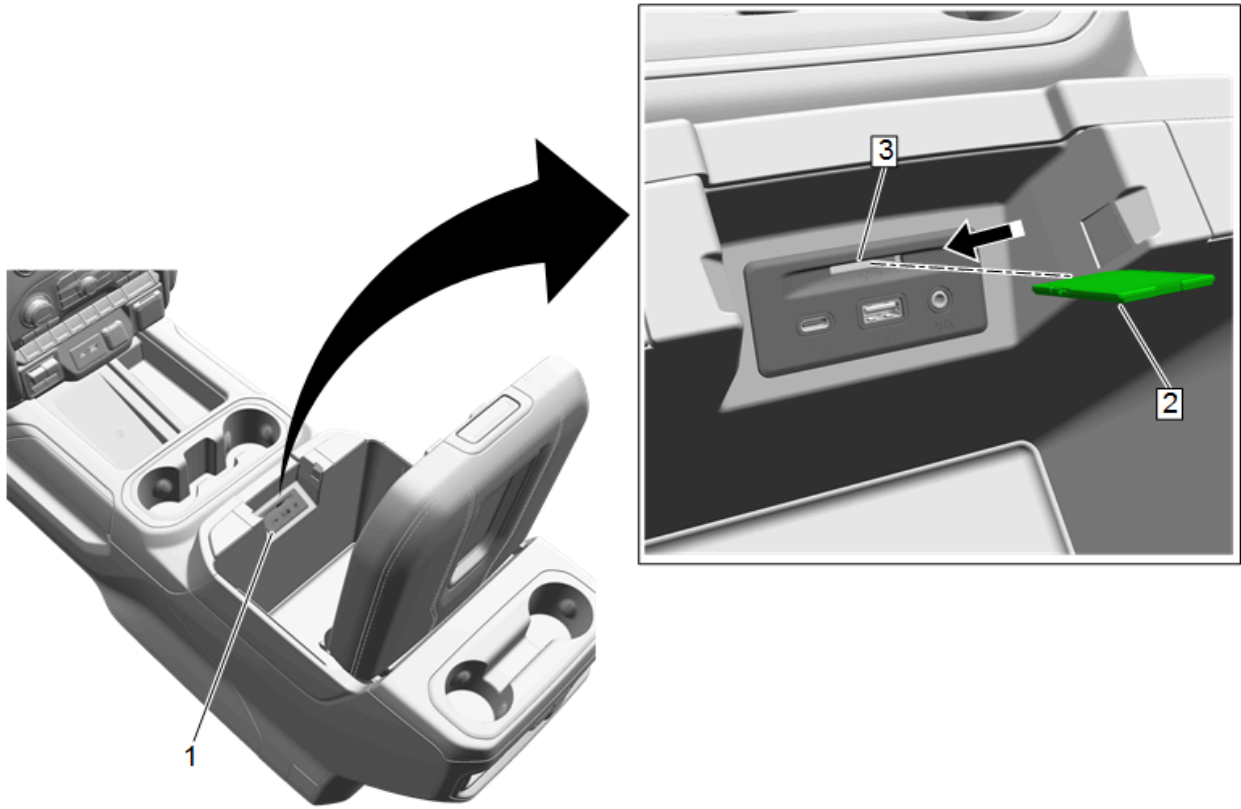
Procedure

Important: Before installing anything in this kit, make sure vehicle is completely turned off and NO cables are installed in any USB hubs (ie for phone charging, music playing, etc.).

1. The USB/SD card interface may be located in either the radio area or in console bin pending on vehicle. Refer to the steps below:



- 1.1. Locate USB/SD Card interface (1) in the radio area if equipped. Insert SD card (2) into slot (3) of USB/SD Card interface.



- 1.2. Locate USB/SD Card interface (1) in the console bin area if equipped. Insert SD card (2) into slot (3) of USB/SD Card interface.

Calibrations

© 2019 General Motors. All rights reserved.

- With the support of the Tech Line, download the new NAV calibration to support the new NAV feature. The radio must be reprogrammed and the Instrument Panel Cluster (IPC) reconfigured to enable the NAV capabilities of the IOS radio.

Note: The installation of this accessory NAV update kit requires programming and configuring of the vehicle. This is done with a Service Programming System (SPS-TIS2WEB). Call TCSC: United States 1-888-337-1010 Canada (English) 1-800-828-6860 Canada (French) 1-800-503-3222. The Techline Customer Support Center will provide programming instructions and changes to the vehicles calibration settings. You must provide the vehicle identification number (VIN) of the vehicle to be programmed and the authorization code when calling TCSC.

- Using the Scan Tool with a MDI, and (SPS-TIS2WEB), update the radio calibration and IPC configuration to activate the NAV feature. During this programming, TIS2WEB will also be updating vehicle status in order to enable "Connected NAV" services through OnStar.

Important: At NO TIME DURING PROGRAMMING and 5 minute sleep mode should the SD card be removed. Removing it before all calibrations are complete may result in corrupting the SD card. Also, it cannot be swapped out with another vehicles' SD Card.

Program for A11 Radio: Programming and Setup (IOU/IOT/IOS)

Replace & Program the Control Module. To program the radio, perform the following procedure:

Note: To program the radio, perform the following procedure:

1. Install the EL-49642 SPS Programming Support Tool.
2. Access the Service Programming System (SPS) and follow the on-screen instructions.
3. On the SPS Supported Controllers screen, select A11 Radio– Programming.
4. At "Audio System" step menu, select **"RPO IOS with S54 (Accessory Navigation Upgrade)"** from the choices.
5. Follow the On-Screen instructions.
6. At the end of programming, choose the "Clear All DTCs" function on the SPS screen.

Program for P16 Instrument Cluster: Programming and Setup

Reprogramming the ECU (except Cadillac). To program the ECU, perform the following procedure:

1. On the SPS Supported Controllers screen, select P16 Instrument Cluster – Programming, Setup and Configuration.
2. Follow the On-Screen instructions.
3. At the end of programming, choose the "Clear All DTCs" function on the SPS screen.

Final Steps

1. Ignition OFF, Retained Accessory Power (RAP) OFF, remove the key fob from range of the vehicle, and let the vehicle sit for five minutes. Retest system operation to verify the programming.
2. Test the function of the NAV to determine if it is functioning by turning on the radio and engaging the NAV button. Maps will load and NAV should engage. This may take a few minutes.
3. Service team at dealership needs to inform the customer that Complete activation & functionality of your Navigation system may take up to 24 hours to initialize Connected NAV capabilities and mobile app usage of the 'send to nav' functionality, which require further paid plans.

Note:

- The NAV SD card must remain in place at all times to allow access to the maps.
- This SD Card cannot be used in other vehicles, it can only be used for this vehicle after it is initialized