

## #PIP5806A: Intermittent Extended Crank No Start And A Possible DTC P0341 Set - (Jun 18, 2021)

**Subject: Intermittent Extended Crank No Start And A Possible DTC P0341 Set**



Brand:	Model:	Model Year:		VIN:		Engine:	Transmission:
		from	to	from	to		
Cadillac	Escalade models	2021		All	All	LM2	All
Chevrolet	Silverado	2020 - 2021		All	All	LM2	All
Chevrolet	Suburban	2021		All	All	LM2	All
Chevrolet	Tahoe	2021		All	All	LM2	All
GMC	Sierra	2020 - 2021		All	All	LM2	All
GMC	Yukon models	2021		All	All	LM2	All

<b>Involved Region or Country</b>	North America
<b>Condition</b>	Some customers may experience an intermittent extended crank or intermittent crank/no start, and may find DTC P0341 set.
<b>Cause</b>	This may be due to a bent trigger wheel on the camshaft.

### Correction

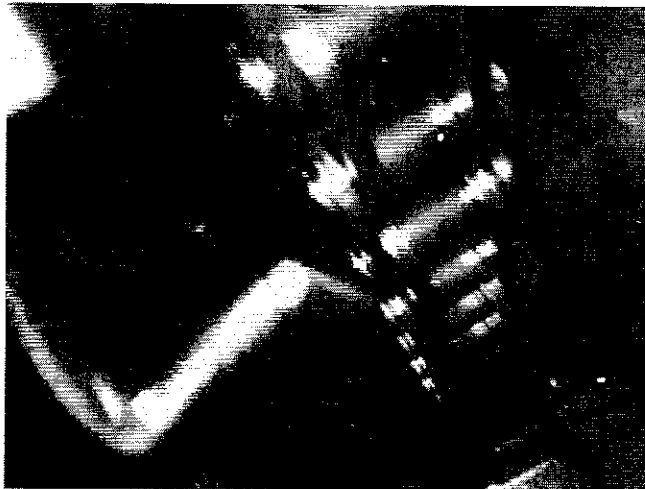
Carefully remove the camshaft position sensor and inspect for metal debris on the surface of the sensor, and use a bore scope to inspect for a bent trigger wheel. If you find debris on the sensor, please take a picture of the sensor, start a TAC case and attach it to the case.

The pictures below show a normal trigger wheel and a bent one.

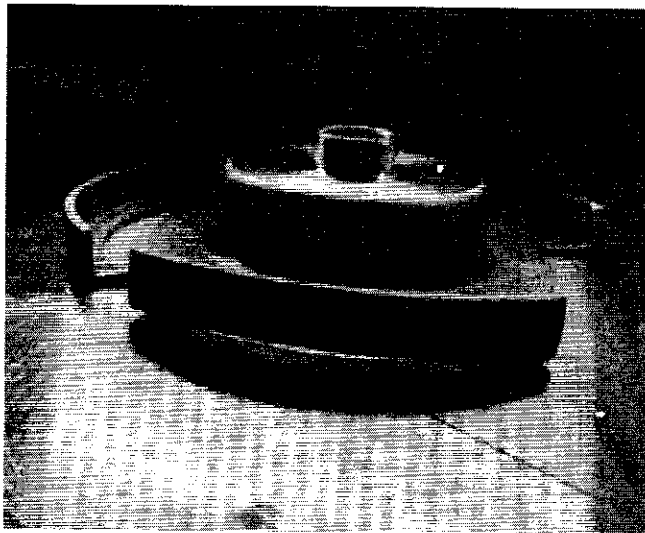
It will be necessary to roll the engine over by hand (up to two revolutions) to inspect each wheel segment.



Above is a normal trigger wheel.



Above is a bent trigger wheel. It may or may not make contact with the timing chain.



This is a bent trigger wheel.

If you find the cam sensor trigger wheel bent, replace it.

If the symptom is an intermittent crank/no start but the trigger wheel is not bent, follow normal SI diagnostics.

### **Warranty Information**

For vehicles repaired under the Bumper to Bumper and Emissions (E) coverage, use the following labor operation. Reference the Applicable Warranties section of Investigate Vehicle History (IVH) for coverage information.

Labor Operation	Description	Labor Time
4088038	Camshaft Position Sensor Exciter Wheel Inspection	3.1 Hrs.
*This is a unique Labor Operation for Bulletin use only.		

Version	2
Modified	05/24/2021 - Created on 06/18/2021 - Modified to include checking for debris on the cam position sensor.

GM bulletins are intended for use by professional technicians, NOT a "do-it-yourselfer". They are written to inform these technicians of conditions that may occur on some vehicles, or to provide information that could assist in the proper service of a vehicle. Properly trained technicians have the equipment, tools, safety instructions, and know-how to do a job properly and safely. If a condition is described, DO NOT assume that the bulletin applies to your vehicle, or that your vehicle will have that condition. See your GM dealer for information on whether your vehicle may benefit from the information.



WE SUPPORT  
VOLUNTARY  
TECHNICIAN  
CERTIFICATION

© 2021 General Motors. All rights reserved.