

Document ID: 5870333

#21-NA-155: Information on Check Trailer Wiring Message and/or Service Trailer Brake Displayed on Driver Information Center (DIC) - DTC C1114 Set - (Sep 21, 2021)

Subject: Information on Check Trailer Wiring Message and/or Service Trailer Brake Displayed on Driver Information Center (DIC) - DTC C1114 Set



Brand:	Model:	Model Year:		VIN:		Engine:	Transmission:
		from	to	from	to		
Cadillac	Escalade Models	2021	2021				
Chevrolet	Silverado 1500 (New Model)	2019	2019				
	Silverado 1500	2020	2021				
	Silverado 2500HD/3500HD	2020	2021				
	Suburban	2021	2021				
	Tahoe						
GMC	Sierra 1500 (New Model)	2019	2019				
	Sierra 1500	2020	2021				
	Sierra 2500HD/3500HD	2020	2021				
	Yukon Models	2021	2021				

Involved Region or Country	North America, Middle East, Chile (West), Thailand (ASEAN), Paraguay
Additional Options (RPOs)	JL1 (CONTROL-INTEGRATED TRAILER BRAKE)

© 2022 General Motors. All rights reserved.

Condition	<p>Some customers may comment on one or more of the following messages displayed on the DIC:</p> <ul style="list-style-type: none"> • Check Trailer Wiring • Service Trailer Brake <p>Some technicians may find DTC C1114 set on vehicles equipped with an Integrated Trailer Brake Controller.</p>
Cause	<p>Note: The below two possible causes can also affect a truck equipped with an aftermarket trailer brake controller</p> <p>This condition may be caused by a poor connection at the 7-way trailer connector at the vehicle and/or trailer side of the connector.</p> <ul style="list-style-type: none"> - Trailer Side Connector (Plug) - There are several manufacturers of 7-way (trailer side) connectors and many do not comply with the SAE standard specifications. Some 7-way (trailer side) connector plugs may not properly engage the truck's 7-way connector socket and cause open circuits. Since the Trailer Brake Control Module is always monitoring the vehicle and trailer circuits/components, a poor connection at the 7-way connector can cause a Check Trailer Wiring message on the DIC. This may also cause deformation and excessive wear of the terminals on the truck's 7-way connector socket. Over time, this will lead to poor terminal tension between the 7-way (trailer side) connector plug and the truck's 7-way connector socket.
Information	<p>7-Way Trailer Connector:</p> <ul style="list-style-type: none"> - The 7-Way Trailer Side Connector (Plug) - Engineering has recommended the use of Pollak Heavy Duty 7-Way (Trailer Side) Connector Plugs. Pollak is the OEM manufacturer of the truck's 7-way connector socket; and by using a Pollak Heavy Duty 7-Way (Trailer Side) Connector Plug, this will ensure proper fit when the two connectors are mated. Pollak's website is: www.pollakaftermarket.com. Once at the home page select "Connectors" then "Heavy Duty 7-Way Plugs and Accessories" and then "RV Connectors Heavy Duty & Adaptors" (example 12-706, 12-702). <p>Note: If the truck's 7-way connector socket terminals are deformed or have excessive wear, it will be necessary to replace the truck side connector, see info below, along with the trailer's 7-way connector plug to a Pollak HD.</p> <ul style="list-style-type: none"> • Truck Side Connector (Socket) - If the truck's 7-way trailer connector socket terminals are deformed, have excessive wear, door/cover not holding trailer connector plug securely, etc. it will be necessary to replace the truck side trailer connector socket with updated GM part number 84056018. <p>Trailer Side Customer Recommendation:</p> <ol style="list-style-type: none"> 1. Inspect and clean the ground wire (normally white wire) connection on the trailer side of the 7-pin connector. 2. Make sure that the wires inside the trailer side connector are clean and securely fastened.

© 2022 General Motors. All rights reserved.

3. If an electrical junction box exists on the trailer, make sure the wires inside the junction box are clean and securely fastened.

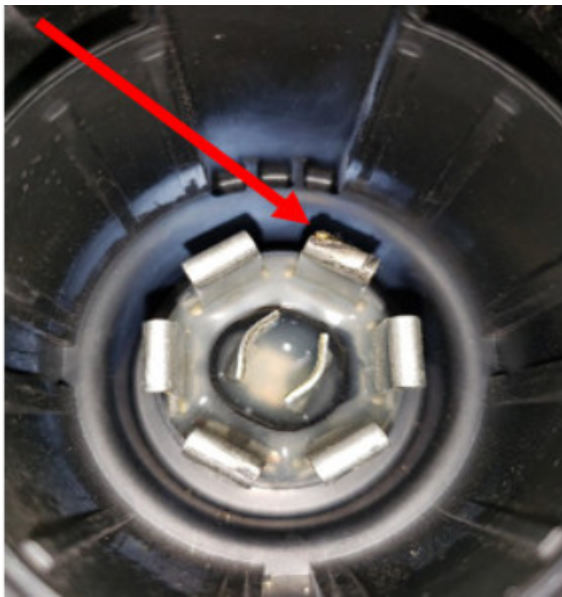
4. Inspect Trailer Grounds for potential issues.

Note: Trailer System issues should not be covered under the GM Bumper-to-bumper warranty.

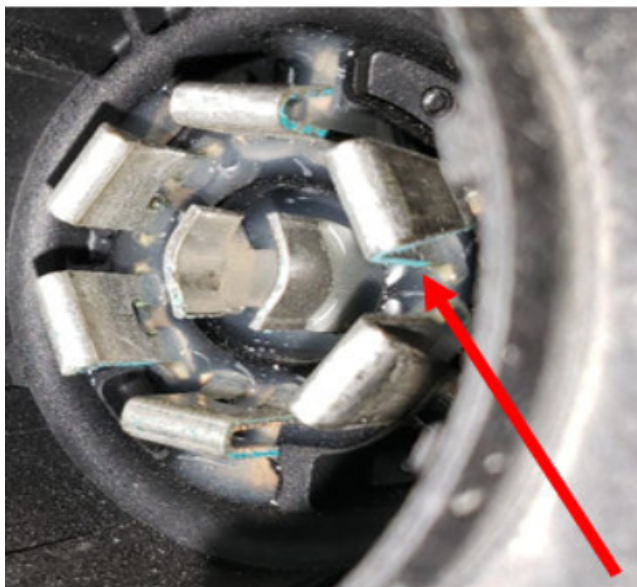
The Following Failures are the Result of Trailer Side Connection Issues - Non Warranty Issue

⇒ When diagnosing trailer message issues without the trailer present, please refer to **Document ID: 5627183: PIT5509G:** Diagnostic Tip - Check and/or Service Trailer Brake System message DTC C1114

The Following failures are the result of trailer side connection issues:

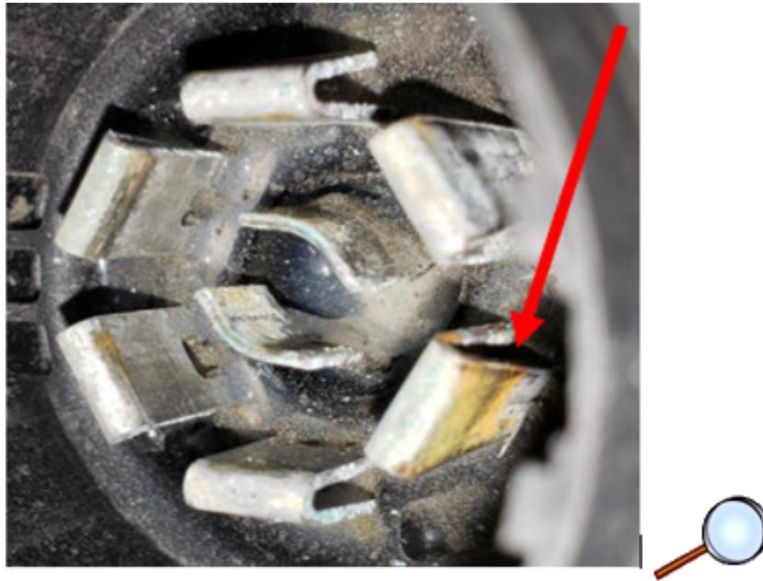


1. Short on trailer side damaged the terminal – Trailer side connector is loose/worn – **Non-Warranty Issue.**

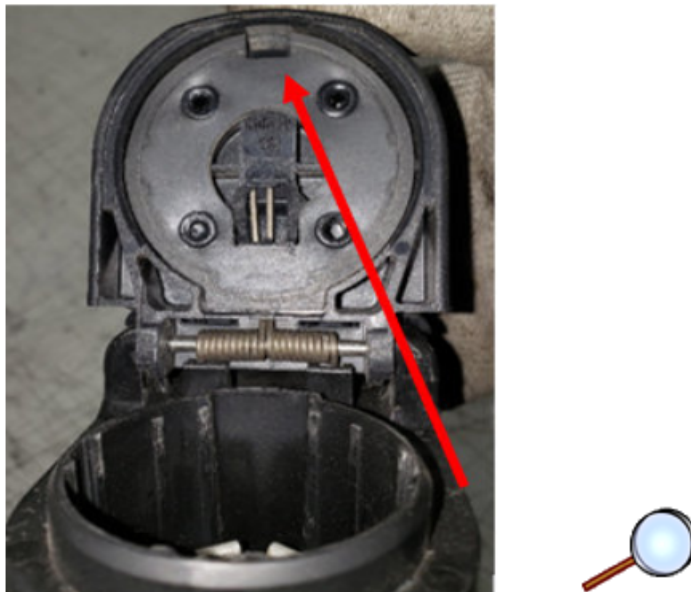


© 2022 General Motors. All rights reserved.

- The blue/green is expected, and this small amount of corrosion does not impact function of connector – **Non-Warranty Issue.**

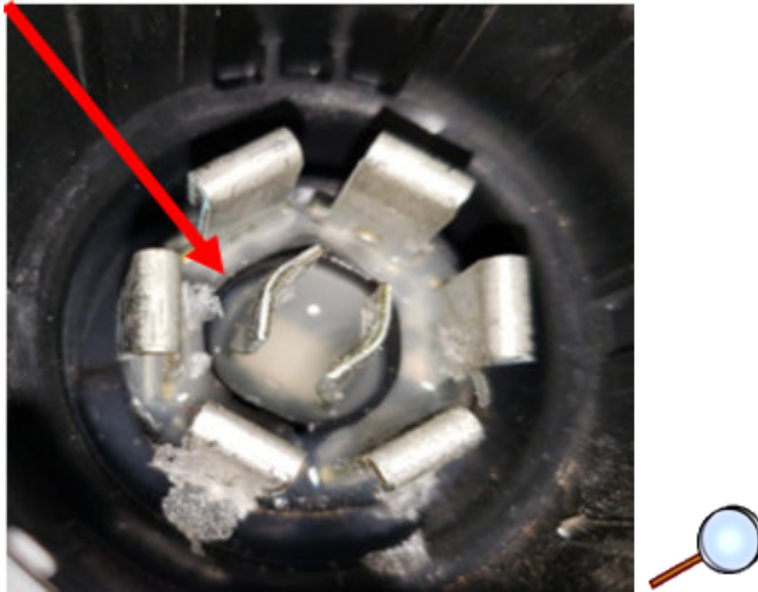


- Trailer side connector is damaged/deformed causing removal of protective plating. This is the result of the trailer side connector is moving or bouncing when connected (excessively worn connector) – **Non-Warranty Issue.**

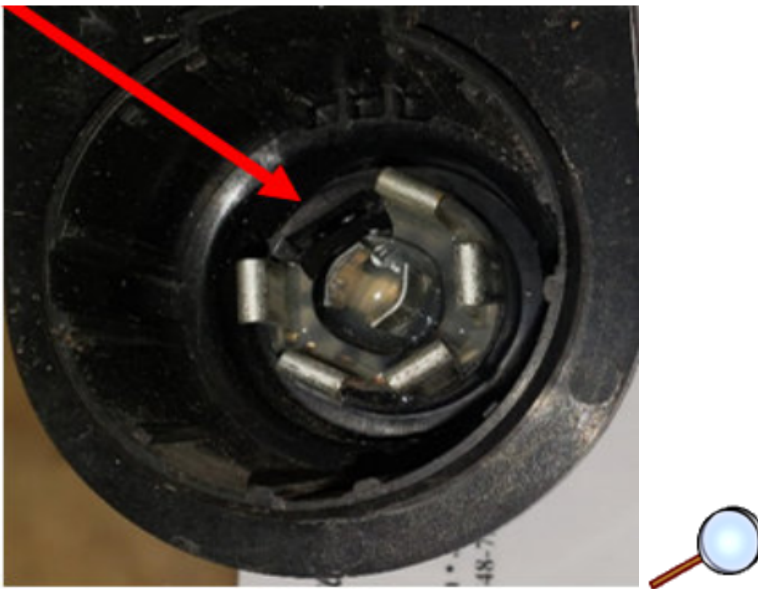


- Trailer side harness retention tab has been broken off cover which is the result of customer pulling away from trailer without releasing the trailer harness – **Non-Warranty Issue.**

The Following Failures are the Result of Vehicle Side Connection Issues - Subject to Terms of Warranty



1. Sealant from part on terminals, would cause intermittent connection issues connecting to trailer – **Subject to terms of warranty.**



2. Terminal is pushed out – **Subject to terms of warranty.**

Parts Information

Causal Part	Description	Part Number	Qty
N/A	84056018	Truck 7-way Trailer Connector Socket	1

Warranty Information

© 2022 General Motors. All rights reserved.

For trailer related issues: No warranty labor operation is provided for concerns related to the trailer.

For Truck 7-Way Connector Replacement use: For vehicles repaired under the Bumper-to-Bumper coverage (Canada Base Warranty coverage), use the following labor operation. Reference the Applicable Warranties section of Investigate Vehicle History (IVH) for coverage information.

Labor Operation	Description	Labor Time
5486198*	Tow Vehicle Electrical Receptacle Diagnostic	0.3 hr
Add	Tow Vehicle Electrical Receptacle Replacement	0.2 hr
*This is a unique Labor Operation for Bulletin use only.		

Version	1
Modified	Released September 21, 2021

GM bulletins are intended for use by professional technicians, NOT a "do-it-yourselfer". They are written to inform these technicians of conditions that may occur on some vehicles, or to provide information that could assist in the proper service of a vehicle. Properly trained technicians have the equipment, tools, safety instructions, and know-how to do a job properly and safely. If a condition is described, DO NOT assume that the bulletin applies to your vehicle, or that your vehicle will have that condition. See your GM dealer for information on whether your vehicle may benefit from the information.



WE SUPPORT
VOLUNTARY
TECHNICIAN
CERTIFICATION