

<- Back

Forward ->

Document ID# 893793
2002 Chevrolet Tahoe - 2WD

Print

Audible Spark Knock (Detonation), MIL Illuminated, DTC P0332 Set (Replace Rear Bank Knock Sensor and RTV Area Around Sensor) #02-06-04-023A - (Jun 14, 2002)

Audible Spark Knock (Detonation), MIL Illuminated, DTC P0332 Set (Replace Rear Bank Knock Sensor and RTV Area Around Sensor)

1998-2002 Chevrolet Camaro, Corvette

1998-2002 Pontiac Firebird

with 5.7L Engine (VIN G -- RPO LS1)

1999-2002 Chevrolet Silverado, Suburban, Tahoe

2002 Chevrolet Avalance

1999-2002 GMC Sierra, Yukon, Yukon XL

2002 Cadillac Escalade, Escalade EXT

with 4.8L, 5.3L or 6.0L Engine (VINs V, T, Z, N, U -- RPOs LR4, LM7, L59, LQ9, LQ4)

This bulletin is being revised to add Cadillac Escalade and Cadillac Escalade EXT to the Models. Please discard Corporate Bulletin Number 02-06-04-023 (Section 6 -- Engine/Propulsion System).

Condition

Some customers may comment on a mild to severe engine ping (commonly referred to as spark knock), usually worse during acceleration and/or an illuminated MIL. Upon investigation, the technician may find DTC P0332 set.

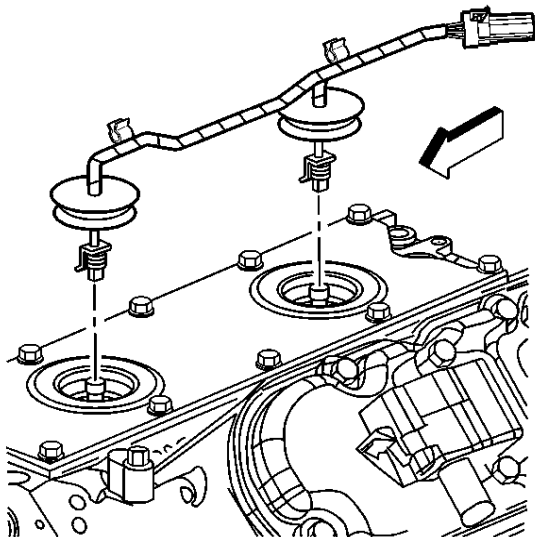
Cause

This condition may be the result of corrosion of the rear bank knock sensor due to water intrusion into the sensor cavity. This condition is more apparent on vehicles in which customers frequently wash the engine compartment.

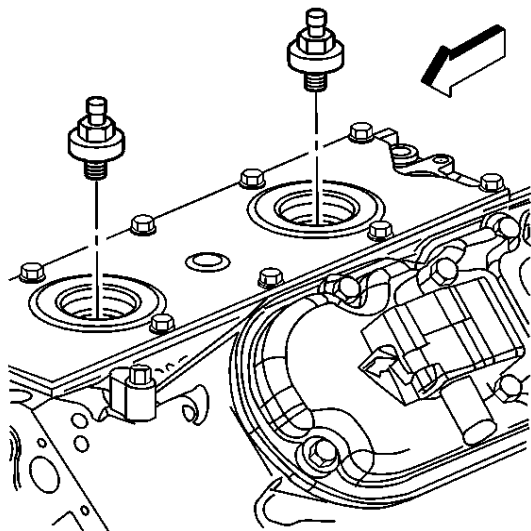
Correction

Replace the rear bank knock sensor and build a dam (wall) around the sensor using RTV to divert water away from the sensor. Use the procedure and part number listed below.

1. Remove the intake manifold. Refer to the Intake Manifold Replacement procedure in the Engine Controls sub-section of the appropriate Service Manual.



2. Remove the wiring harness assembly from the knock sensor.

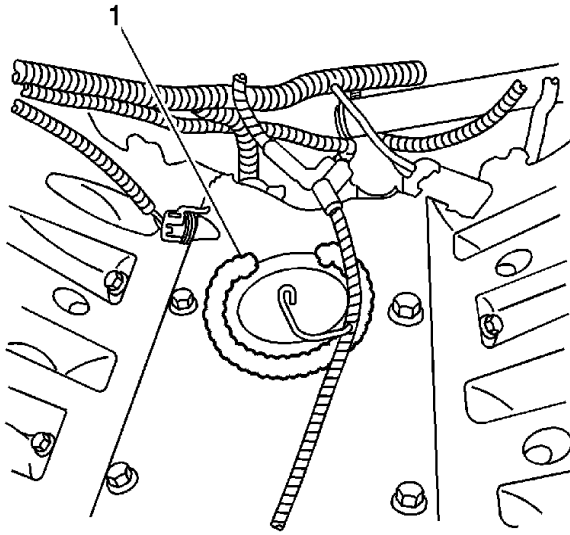


3. Remove the rear bank knock sensor.
4. Install the new rear bank knock sensor.

Tighten

Tighten the knock sensor to 20 N·m(15 lb ft).

5. Install the wiring harness assembly to the knock sensor.



6. Apply a bead of RTV silicone sealant approximately 9 mm (3/8 in) wide and 6 mm (1/4 in) high along the outside edge of the ridge on the engine block valley cover around the rear bank knock sensor. DO NOT form a complete circle. Leave the rear section open as shown.
7. From the underside of the intake manifold, completely remove the rear intake manifold seal (foam material).
8. Install the intake manifold. Refer to the Intake Manifold Replacement procedure in the Engine Controls sub-section of the appropriate Service Manual.

Parts Information

Part Number	Description	Qty
10456603	Sensor, Knock	1

Parts are currently available from GMSPO.

Warranty Information

For vehicles repaired under warranty, use:

Labor Operation	Description	Labor Time
J4437 (F-Car)	Sensor, Knock -- Replace	1.7 hrs
Add (1998-1999 F-Car Only)	To Remove EGR	0.2 hr

J4437 (Y-Car)	Sensor, Knock -- Replace	1.6 hrs
J4437 (C/K-Truck)	Sensor, Knock -- Replace	1.5 hrs
Add (C/K Truck Only)	With Three Piece Engine Covers	0.2 hr
Add (All)	Diagnosis Time	0.3 hr
Add (All)	To RTV Area Around Sensor and Remove Intake Manifold Seal	0.2 hr

GM bulletins are intended for use by professional technicians, NOT a "do-it-yourselfer". They are written to inform these technicians of conditions that may occur on some vehicles, or to provide information that could assist in the proper service of a vehicle. Properly trained technicians have the equipment, tools, safety instructions, and know-how to do a job properly and safely. If a condition is described, DO NOT assume that the bulletin applies to your vehicle, or that your vehicle will have that condition. See your GM dealer for information on whether your vehicle may benefit from the information.



WE SUPPORT
VOLUNTARY
TECHNICIAN
CERTIFICATION

© Copyright General Motors Corporation. All Rights Reserved.

<- Back

Forward ->

Document ID# 893793
2002 Chevrolet Tahoe - 2WD

Print